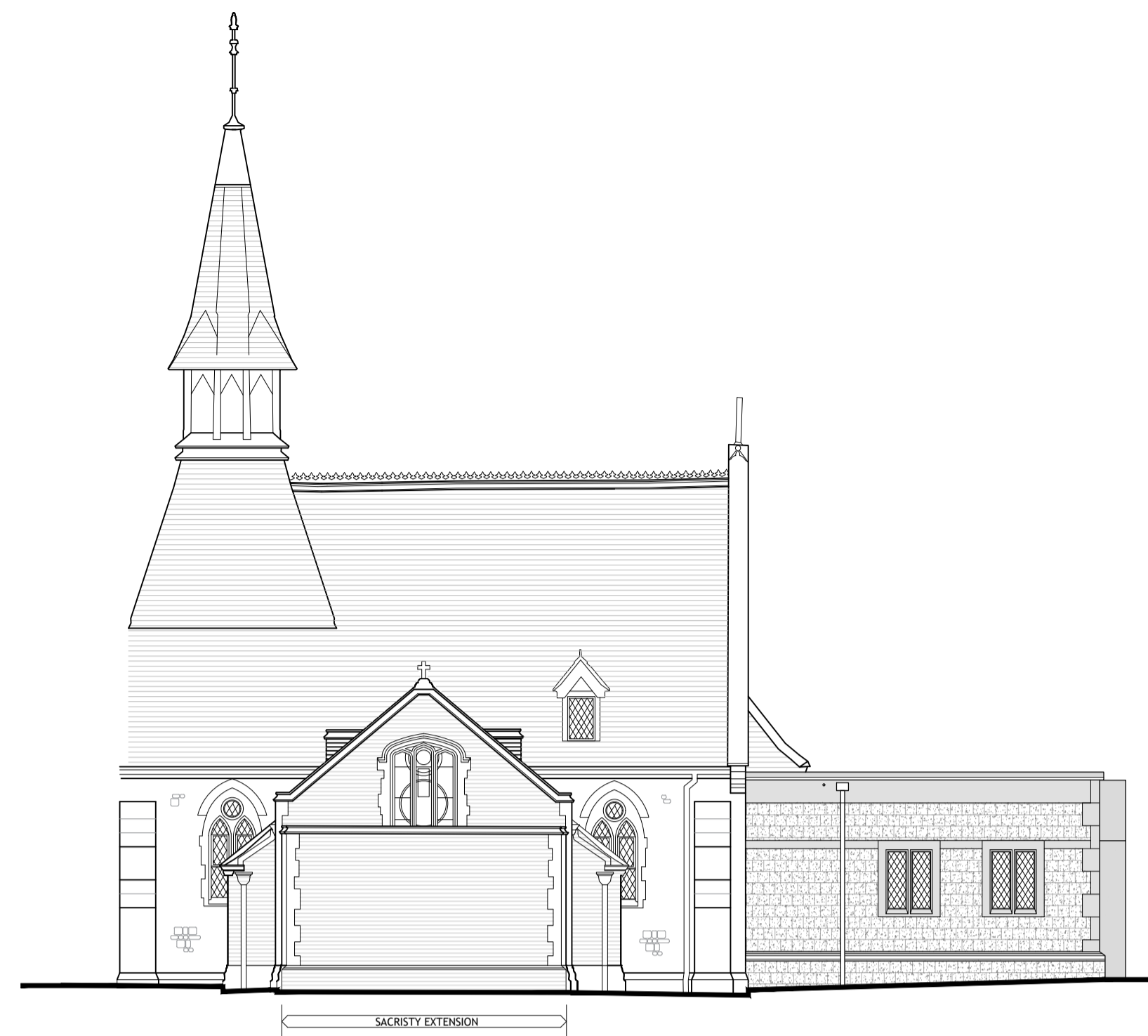


Contractors are to check all levels and dimensions before work is put in hand, and any discrepancies are to be referred to the architects

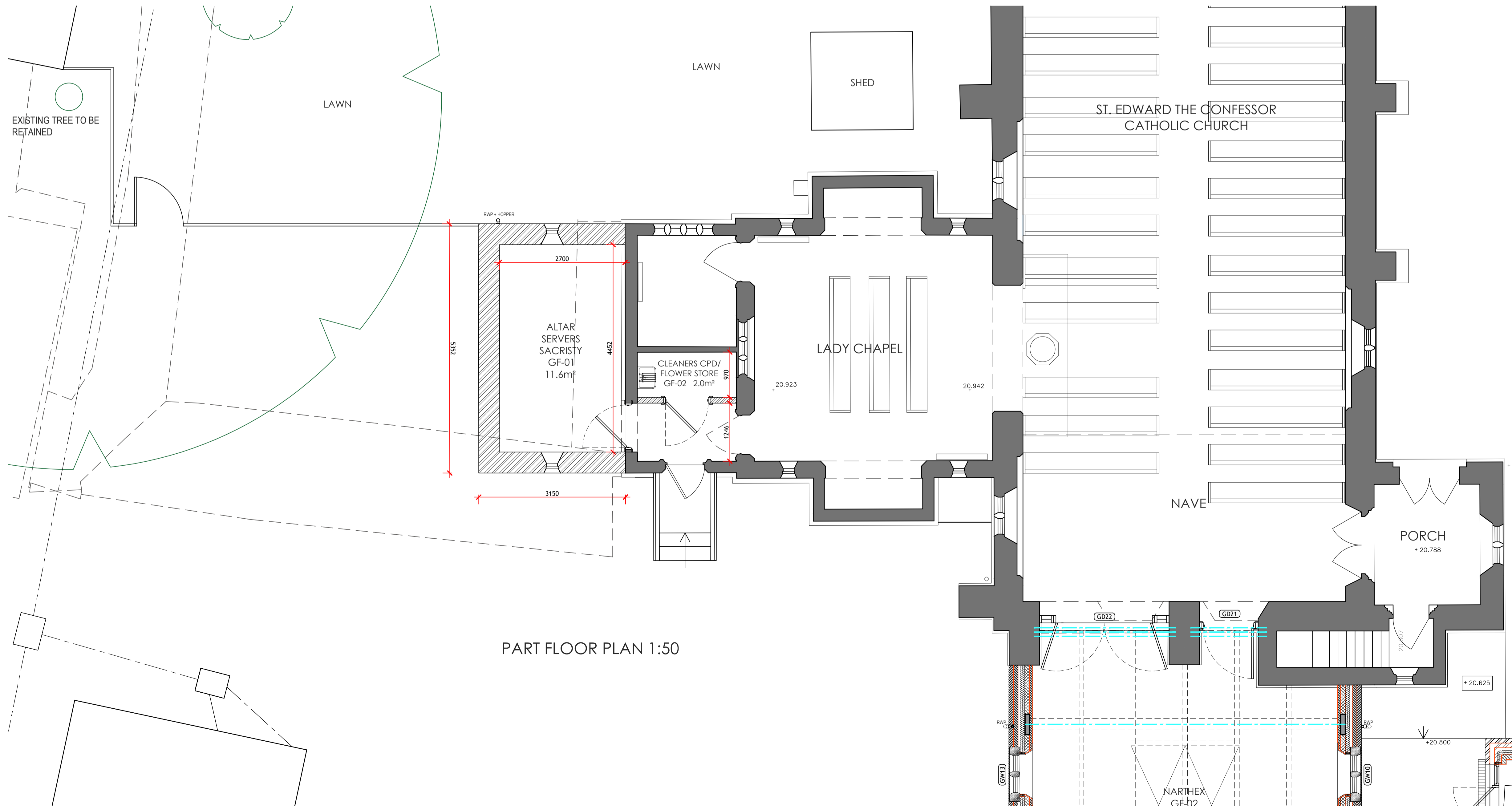
REV	DATE	DESCRIPTION	DWN	CHKD
P1	13.10.22	PRELIMINARY ISSUE	ZRN	SG
P2	14.10.22	PRELIMINARY ISSUE	SG	-



PROPOSED PART SOUTH WEST ELEVATION - 1:100



PROPOSED PART NORTH WEST ELEVATION - 1:100



PART FLOOR PLAN 1:50



Architects + Interior Designers Limited
 123 NEW LONDON ROAD, CHELMSFORD,
 ESSEX. CM2 0QT
 TEL: +44 (0) 1245 269755 FAX: +44 (0) 1245 250310
 E-MAIL: admin@lap-architects.co.uk
 www.lap-architects.com

project

St. Edward the Confessor
 Catholic Church, 5 Park End
 Road, Romford, Essex, RM1 4AT

client

Diocese of Brentwood

drawing title

Alternative Sacristy Extension
 Location Part Plan + Elevations

drawing number	revision
8963 / SK30	P2
checked	SG
scale 1:100/50 @ A1	drawn ZN
	date Oct 2022

This drawing is the property of LAP Architects + Interior Designers Ltd. and must not be copied or reproduced in any way in whole or in part without the express permission of LAP Architects + Interior Designers Ltd. Copyright © LAP Architects + Interior Designers Ltd.